

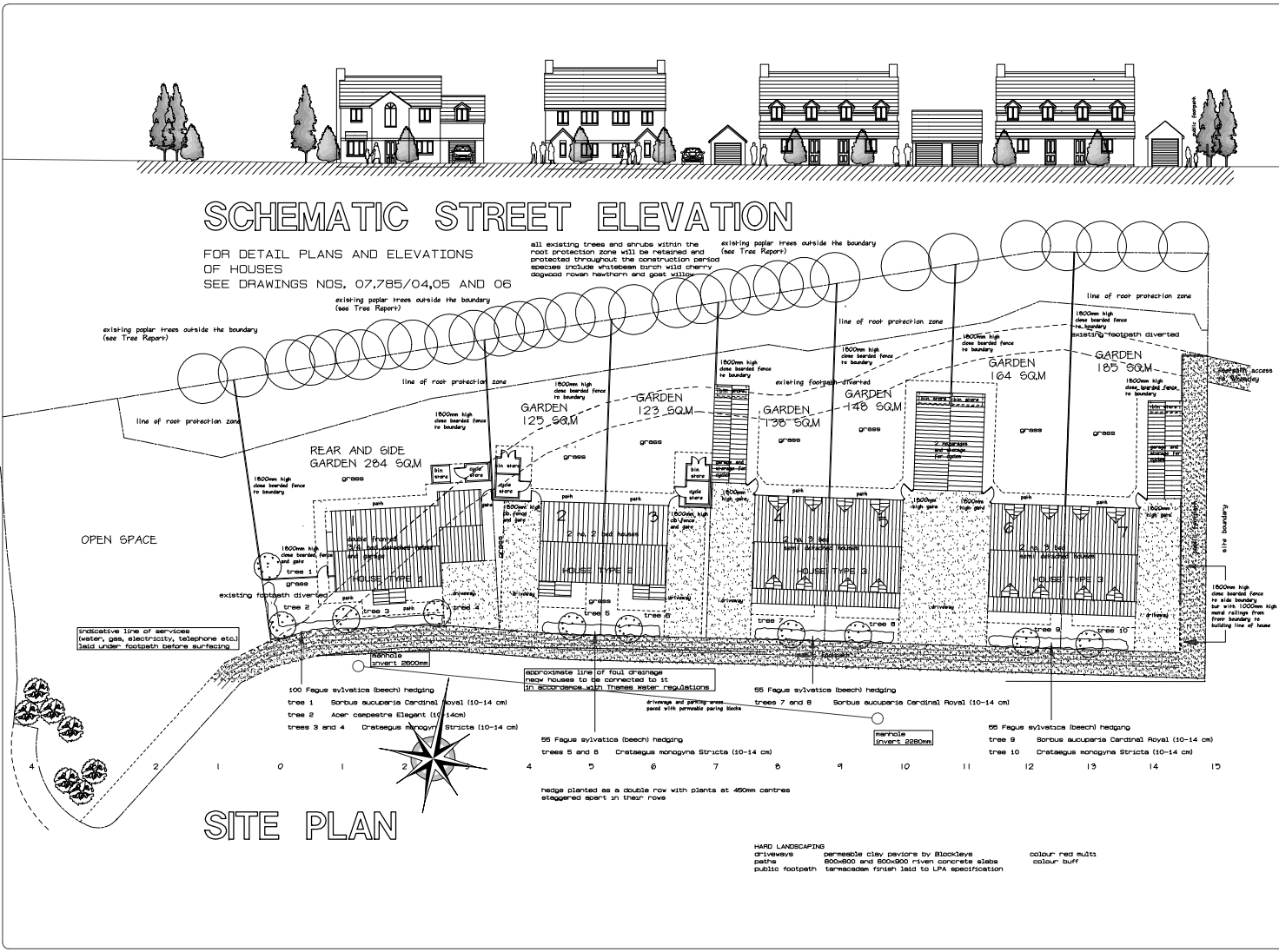
Appendix 1

Enquiry System

Printed on 17/04/2013
for JULMAT
at scale of 1:1,250



DO NOT SCALE DRAWING



SCHEMATIC STREET ELEVATION

FOR DETAIL PLANS AND ELEVATIONS OF HOUSES
SEE DRAWINGS NOS. 07,785/04,05 AND 06

all existing trees and shrubs within the root protection zone will be retained and protected throughout the construction period species include whitebeam, hawthorn, wild cherry, dogwood, rowan, hawthorn and goat willow

Revisions Date
THIS DRAWING TO BE READ IN CONJUNCTION WITH DRAWING NO. 07,785/02C

- rev. tree 3 altered to match tree 4 February 2011
- rev. G services strip in footpath and final drain in road shown November 2010
- rev. F garage amended November 2010
- rev. E hard and soft landscaping shown October 2010
- rev. D garage bin stores and cable stores amended October 2010
- rev. C additional notes and information added January 2010
- rev. B user 1 reduced and moved January 2010

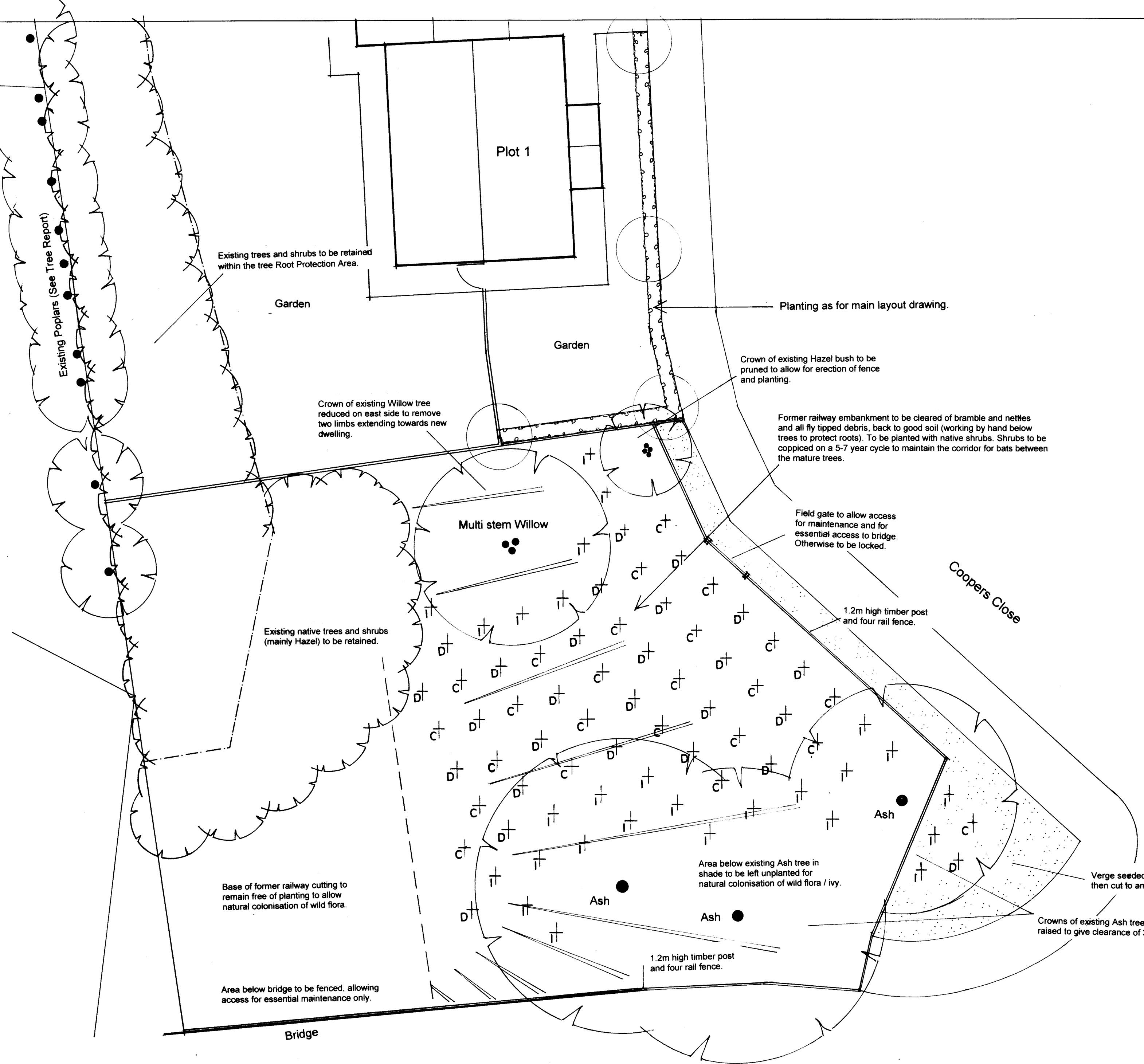
VICTOR C.B. ROWN
 CONSULTANT
 P: 0800 668 920
 T: 0800 668 920

Client
DRAYTON PARK HOME ESTATES

PROPOSED DWELLINGS
LITTLEWORTH PARK WHEATLEY

REVISED SITE PLAN
Title
1:200 (at A2 size)
JANUARY 2010
07,785/03G

Scale
Date
Dwg. No.

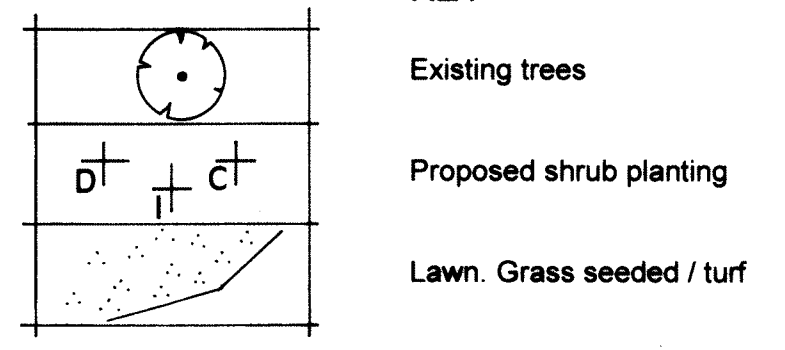


Appendix 3

Planting Schedule

No.	Tree / Shrub Species. (All planted at 1.5m centres and protected with a plastic mesh vermin guard).	Size and Condition.
24	C - <i>Corylus avellana</i>	1.00 - 1.2m. 8 litre containers.
26	D - <i>Cornus sanguinea</i>	0.8 - 1.2m. 8 litre containers.
27	I - <i>Ilex aquifolium</i>	0.8 - 1.2m. 8 litre containers.

KEY



Project:
Proposed Dwellings, Littleworth Park, Coopers Close, Wheatley.

Drawing:
Landscape Planting Proposals

Scale: 1:100 Date: October 2010

Drawing No.
SB/JS/171

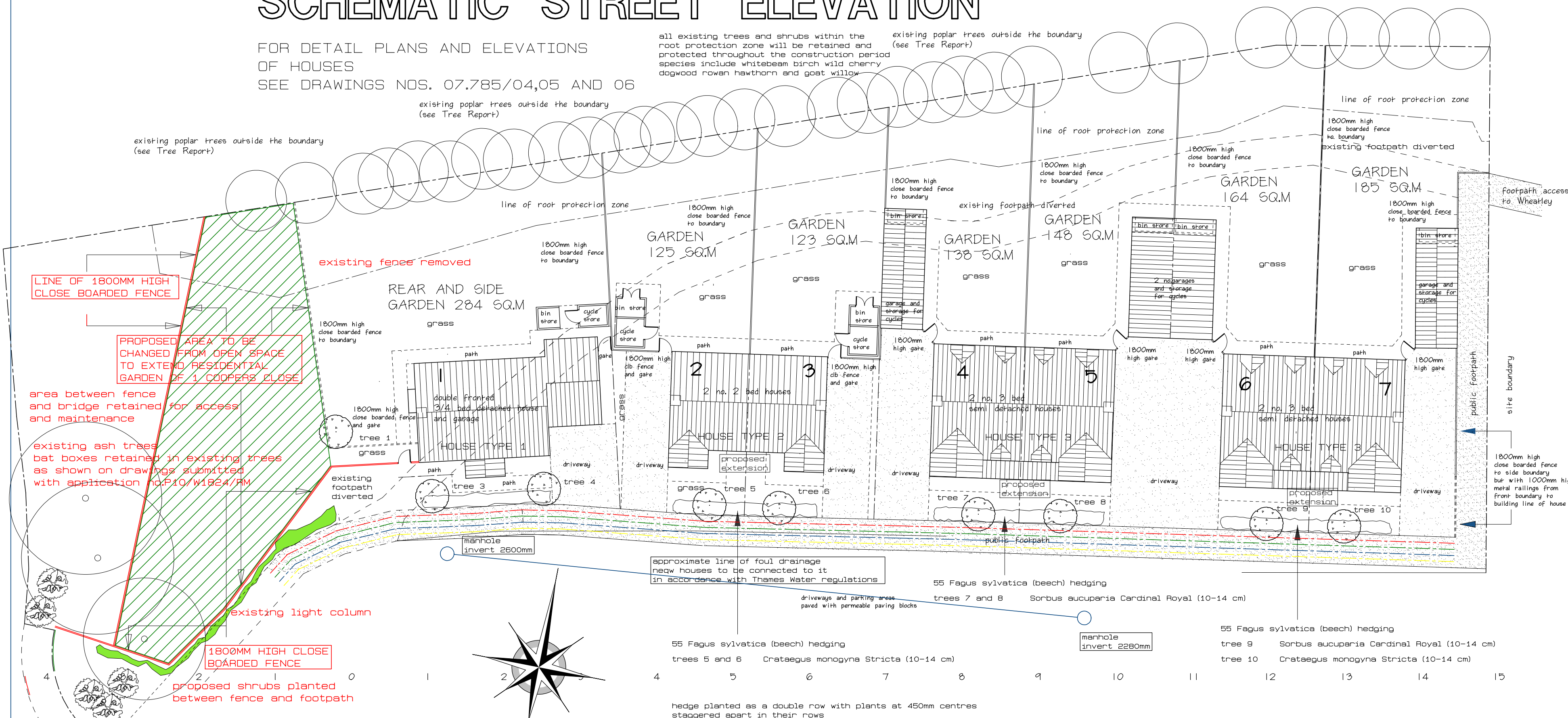
Sacha Barnes Ltd
The Colin Sanders Innovation Centre, Mewburn Road, Banbury, OX16 9PA
Tele: 01295 817640, email: enquiries@sachabarnes.com
Base survey provided by Victor C. Brown, Architect.

Design Note: The planting proposals do not take account of existing or proposed underground services. When planting trees and shrubs in the vicinity of services and buildings, provision must be made to protect them from root development and the possible effects they can have on the surrounding soils.

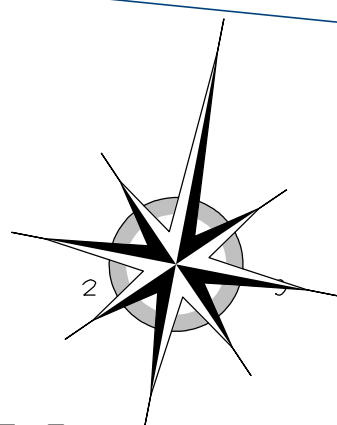
SCHEMATIC STREET ELEVATION

FOR DETAIL PLANS AND ELEVATIONS OF HOUSES
SEE DRAWINGS NOS. 07.785/04,05 AND 06

all existing trees and shrubs within the root protection zone will be retained and protected throughout the construction period species include whitebeam birch wild cherry dogwood rowan hawthorn and goat willow
existing poplar trees outside the boundary (see Tree Report)



SITE PLAN



HARD LANDSCAPING
driveways permeable clay paviors by Blockleys
paths 600x600 and 600x900 riven concrete slabs
public footpath tarmacadam finish laid to LPA specification
colour red multi
colour buff

Appendix 4

Revisions	Date
THIS DRAWING TO BE READ IN CONJUNCTION WITH DRAWING NO. 07.781/02C	
prepared from drawing no. 07.785/036	
rev notes amended B	aug. 2015
rev line of fence on west side of extended garden altered and notes amended A	aug. 2015

VICTOR C. BROWN
— CHARTERED ARCHITECT —

AYLSHAM NR11 6UB TEL: 01865 351888

Client
MRS G HARRIS

Job
PROPOSED VARIATION OF CONDITION 1 COOPERS CLOSE LITTLEWORTH

Title
REVISED SITE PLAN

Scale **1:200 (at A2 size)**
Date **MAY 2015**
Drg. No. **15.969/01B**